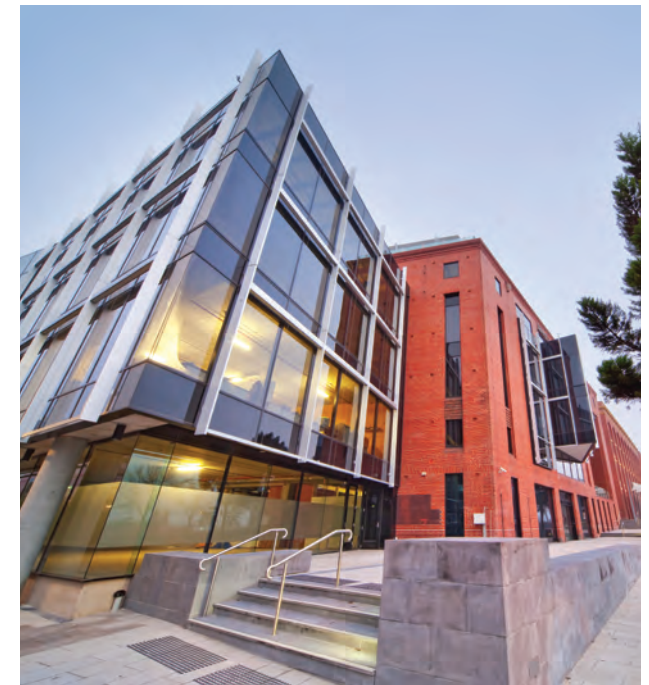


## GEELONG WATERFRONT CAMPUS

1 Gheringhap Street Geelong Victoria 3217



accessible parking	bicycle rack
unisex accessible toilet	bus stop
stairs	main entry
lift	car park entry
platform lift to level one only — restricted access by prior arrangement, contact Security	car park
	car parking permit vending machine

Deakin University CRICOS Provider Code: 001 138



## Geelong Waterfront Campus

C = Deakin Commercial Precinct

ad = Dennys Lascelles Building

D = John Hay Building

Academic/Research	Building	Level
Alfred Deakin Prime Ministerial Library	ad	1
Alfred Deakin Research Institute	ad	1
Architecture and Building	D	4
Deakin Learning Futures	ad	6
Deakin University English Language Institute (DUELI)	D	4
Health – Student and Academic Services	D	2
Higher Education Research Group (HERG)	ad	4
<b>LIBRARY</b>	D	3
Melbourne Institute of Business Technology (MIBT)	ad	3
School of Nursing and Midwifery	ad	3
Occupational Science and Therapy	D	4
Occupational Science and Therapy OWLS Room	ad	2
Psychology	C	3
Social Work	D	3

### Lecture Theatres

D2.193 (Percy Baxter Lecture Theatre)
D2.194
D2.304 (Costa Hall)
D4.303 (Costa Lecture Theatre)

### Room numbers

Room numbers at Deakin University comprise the building letter or letters; the level (starting at 1 for ground level); the primary room number; and a secondary room number, for rooms that are accessed via another room. Thus D2.194 indicates building D, level 2, room 194.

### Accessibility

Wheelchair access is available from Gheringhap St (building D) and Cunningham St (building ad).

Administrative/General	Building	Level
ATM	D	2
Accessible shower	D	1
Baby change facilities	D	3
Bike racks (under cover – access via CP1)	D	1
Bookshop (DUSA)	D	2
Cafe	D	1
Callista Software Services	C	4
Cashier	D	2
Chancellor	ad	4
Committee for Geelong	D	2
Corporate Governance, Risk and Compliance	ad	4
Deakin Card reload station	D	2
<b>Deakin Central (student administration)</b>	D	2
Deakin Education Abroad	D	4
Deakin University Student Association (DUSA)	D	1
Equity and Diversity Unit	D	2
Events and Public Relations	D	1
Ford Discovery Centre	C	1
Gallery	D	2
Information Technology Services Division (ITSD)	ad	5
Internal Audit	ad	4
Marketing – National Recruitment	ad	6
Mature Age Room (DUSA)	D	1
Medical Centre (business hours only)	D	2
Muslim Prayer Room	D	1
Parents Room (contact Security if not open)	D	1
Strategic Intelligence and Planning Unit	ad	4
Records Unit	C	1
<b>SECURITY – Ph 5227 8222 or 1800 062 579</b>	D	2
<b>Student Life (DSL) (Medical Centre, careers and employment, counselling, study skills, financial assistance, international student support, chaplains, off-campus housing)</b>	D	2
Student Recreation Room (DUSA)	D	1
University Solicitor's Office	ad	4

### Construction activity

A number of major developments are under way on campus in 2012. For updated versions of this map, please go to [www.deakin.edu.au/maps](http://www.deakin.edu.au/maps) and for major project information go to [www.deakin.edu.au/about/facilities/index.php](http://www.deakin.edu.au/about/facilities/index.php)

### Litter

Please use the appropriate bins to dispose of your rubbish, both on and off campus.

### Parking

Please note that there is no on-campus parking for visitors unless special arrangements have been made. Information about car parking in the surrounding area is available at [www.geelongaustralia.com.au/community/parking](http://www.geelongaustralia.com.au/community/parking)

On-campus parking for staff and students is also very limited, so you are encouraged to seek alternatives such as public transport or cycling, or to carpool. For more information go to [www.deakin.edu.au/travelsmart/carpooling-intro.php](http://www.deakin.edu.au/travelsmart/carpooling-intro.php) or [www.viclink.com.au](http://www.viclink.com.au). To park on campus, you will need a parking permit. Staff and students can buy long- or short-term permits from the Cashier or Deakin Central, or day permits from the permit vending machine in Car Park 2. Please note that buying a permit allows you to park in defined zones, but does not guarantee that a space will be available. See [www.deakin.edu.au/parking](http://www.deakin.edu.au/parking). If you cannot find a space on campus, you will need to make other arrangements.

### Smoking

Smoking is not allowed in, or within 10 metres of, University buildings or where there is a no smoking sign.

### Security

Security Officers are available on campus 24 hours a day, seven days a week. Call **222** from any internal phone, or **1800 062 579** or **5227 8222** from any phone. Subject to availability, a Security Officer can accompany you to your vehicle or another location on campus whenever you do not feel comfortable making the trip alone. Call 10 minutes before you wish to leave. For more information, collect a Security brochure from Deakin Central or go to [www.deakin.edu.au/security](http://www.deakin.edu.au/security)

### Further information

[www.deakin.edu.au/campuses](http://www.deakin.edu.au/campuses)

[www.deakin.edu.au/security](http://www.deakin.edu.au/security)

[www.deakin.edu.au/parking](http://www.deakin.edu.au/parking)